



Youth Assistance Program *News*

The Grosse Pointes & Harper Woods

Community Assessment Referral & Education (CARE) www.caresworklifesolutions.com

SPRING 2008

Grosse Pointe & Harper Woods Crime Data

One year's worth of data on crime has been compiled from the five Grosse Pointe municipalities and Harper Woods. The results follow*:

Minors in Possession	47
Other youth crime (curfews violation, truancy, etc.)	27
Drug related crime, youth or adult (not defined in data collection)	31
Crime involving a vehicle (stolen, unauthorized use, etc.) Does not include traffic tickets, youth or adult (not defined in data collection)	59
Car crashes by youth (3 municipalities reporting)	27

*Note that municipalities report differently under various categories and these statistical report may not include all incidents of youth involvement. The numbers do not reflect the total number of those youth who were "warned and released." Only one municipality reported on a number for warned and released.

Join Together Sites the Following Risks of "Experimentation"

Drug and alcohol abuse by teens is not something to be taken lightly.

- More teens are in treatment with a primary diagnosis of marijuana dependence than for all other illicit drugs combined.
- A 1998 study by the National Institute on Alcohol Abuse and Alcoholism says if a 15-year-old starts to drink, he or she has a 40% chance of alcoholism or dependence as an adult.
- Kids are using marijuana at an earlier age. In the late 1960s fewer than half of those using marijuana for the first time were under 18. By 2001, about two-thirds (67 percent) of marijuana users were younger than 18.
- Marijuana affects alertness, concentration, perception, coordination and reaction time, many of the skills required for safe driving and other tasks. These effects can last up to 24 hours after smoking marijuana. Marijuana use can also make it difficult to judge distances and react to signals and sounds on the road.
- Smoking marijuana leads to changes in the brain that are similar to those caused by cocaine, heroin, or alcohol.

Risk of Addiction

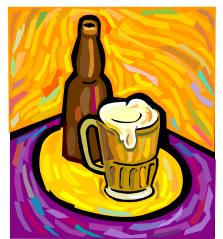
The following table published by Behavioral Health and Research (ADAPT) in Roseburg, Oregon shows the most recent national surveys comparing the risk of addiction to various drugs. We know that not everyone that uses drugs will become addicted to them but we also know that like playing Russian Roulette, many will become victims.

Drug Type	Percent Who Have Tried	Percent Dependent	Risk of Addiction
Nicotine	75.6%	24.1%	31.9%
Methamphetamine	5.8%	1.8%	31.0%
Cocaine	16.2%	2.7%	16.7%
Alcohol	91.5%	14.1%	15.4%
Heroin	1.5%	0.4%	12.1%
Marijuana	46.3%	4.2%	9.1%

How to use the table: look at Nicotine. According to most national surveys, approximately 75% of people have tried smoking cigarettes. Most people do not continue smoking, but about a quarter of those who tried, become addicted. For those that smoke, it means there is a 31.9% chance, or about one in three, of becoming addicted. Most would agree that these odds are bad. Statistics also show that if a person has addiction in their family, their odds are worse.

Drinking Games is a Growth Business

An ever-growing number of drinking games aimed at college-age drinkers are hitting the marketplace and more entrepreneurs are looking to cash in.



Paper cups and ping-pong balls have been replaced with a variety of high-tech drinking games on college campuses and elsewhere. Examples include specialized dice, games involving roulette wheels, and drinking games based on the cartoon "The Family Guy." The latter orders players to drink when characters on the show take certain actions.

The products are typically sold online and at stores like Spencer's.

ADULT MENTORS WANTED

Volunteers are needed to mentor community youth of the Grosse Pointes and Harper Woods.

Caring adults 21+, students, professionals, stay-at-home parents, all are welcome. Training provided, flexible hours to meet volunteer's schedules.

Interested mentors must complete the following but **not** limited to:

- ◆ Interview with Coordinator
- ◆ 6 hour Empathy Training
- ◆ Criminal Background Check
- ◆ 1 year Commitment to the Program
- ◆ Approximately 1-2 Hours Per Week
- ◆ Approximately 8 Hours Per Month
- ◆ Weekly Supervision

Please call Stacie Bruneel, the Youth Assistance Coordinator, at 313-332-0972 for more information.



FREE Youth Support Summer Camp

CARE's Youth Support Summer Camp will be held on July 8-11 and July 14-17th from 8:30am to noon at Cornerstone Baptist Church at 17017 12 Mile Road in Roseville. The camp is for youth ages 6 - 15 who are either concerned about a family member's use of alcohol or other drugs or have a family member in recovery from addiction. Children will learn tools to reduce their anxiety, develop healthy coping skills, learn about addiction and discover they are not alone with their concerns. The camp is full of fun activities while using a skill-building approach. A FREE parent education/support group is also available at the same time but is not mandatory. For more information or to register, please call 586-541-0033.

CARE is dedicated to the prevention of alcohol, tobacco and other drug use.

Program funding is provided by Community Foundation of Southeast Michigan and the communities of Grosse Pointe, Grosse Pointe Farms, Grosse Pointe Park, Grosse Pointe Shores, Grosse Pointe Woods and Harper Woods.

Young Women's Lives

CARE will facilitate an ongoing 8-week program for girls ages 13-16 who are experiencing difficulty with relationships, school commitments and other social situations. Please call Shelly Bania at 586-541-0033 ext. 222 for more information.



Anger Management for Adolescents

Six sessions teach family members how to manage their strong emotions more effectively.

Please contact Lynda Zott at 586-541-0033 ext. 215 for upcoming dates.

CARE's Parenting Workshops

CARE offers a wide variety of Parenting Workshops including Parenting Young Children, Parenting School Aged Children, and Parenting Teenagers.



Check out our website for information about Workshops for those with specific needs include parenting children with ADD/ADHD, Single Parenting and Exploring Codependent Relationships - www.caresworklifesolutions.com.

These 8-session workshops address the needs of families including communication and discipline techniques, age appropriate behavior, and ways to have fun with your family.

teenintervene

Teen Intervene is a program for youth, ages 12-19 who are suspected of experiencing mild or moderate problems associated with alcohol or other drug use.

A three-part parent session is run simultaneously and is mandatory for teen participation.

Call Lynda Zott at 586-541-0033 ext. 215 for more information.

21012 Mack Avenue
Grosse Pointe Woods, MI 48236
Phone: 313-332-0972
Fax: 313-469-6956
www.caresworklifesolutions.com

31900 Utica Road
Fraser, MI 48026
Phone: 586-541-2273
Fax: 586-541-2274
www.caresworklifesolutions.com

Main Office Hours:
M, T, TH: 8:30 am - 9:00 pm
W & F: 8:30 am - 5:00 pm
Grosse Pointe Office Hours Vary